

Orchard Gateway

313 Somerset  
Somerset MRT

Design Orchard

**VERSEAS** Education.sg  
Since 2002 61009800  
Getting U to the Best Uni Possible

**WE ARE HERE**  
Centrally Located  
Downtown Orchard

# Proposal

*to recruit quality Students for*

# Monash University

**22** YEARS OF  
**EXCELLENCE**

Your Trusted Partner-in-Excellence

☎ 6100 9800 ☎ 6817 9800  
(10 Lines)



+65 9738 2086



info@**Overseas**Education.sg





## About Us.

**OverseasEducation.sg** is one of Singapore's most prominent and fastest-growing overseas student placement agencies since 2002. We have been appointed by leading universities worldwide:- we represent many prestigious institutions, including those from the World Top 100, UK Russell Group and Australia Group of 8.

With over 22 years of experience, our dedicated team provides expert support in student recruitment, helping students navigate the application and pre-departure process smoothly. Our proven approach significantly improves the application-to-conversion rate, ensuring mutual success for both students and partner universities.

**>100**  
Unis & Colleges

**22+**  
Years of Excellence

**>5,000**  
Success Cases

**14**  
World Top 100 Unis

## Our Services to our students



## What Makes us Stand Apart from Others?

At **OverseasEducation.sg**, we stand out for our ability to recruit quality students with minimal commitment from our partners. Here's how we make a difference:

### Efficient Recruitment

Our team maintains close communication with university representatives via email, WhatsApp & Zoom, ensuring real-time updates and efficient collaboration.

### High Conversion Rate

Our personalized approach and proactive communication result in a high application-to-enrollment conversion ratio.

### Low Maintenance, High Efficiency

We require minimal resources from our partners while maximizing recruitment effectiveness. We can start recruiting from Day 1.

### Experienced Recruitment Team

The majority of our counsellors are senior counsellors. Collectively, we have >70 years student recruitment experience with our founder leading the recruitment team.



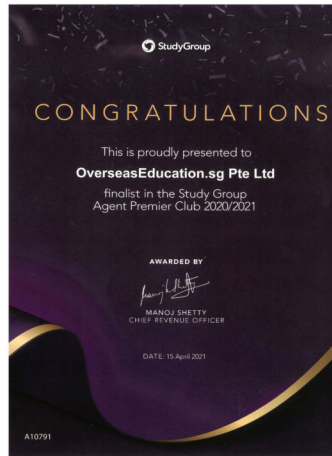
# Our Awards & Recognitions



**Top Agent Southeast Asia 2021 & 2022**  
**Kaplan International Pathways (UK)**  
(Foundation leading to Bristol, Nottingham, Birmingham, Brighton, York, Queen Mary, UWE etc)



**Platinum Partner Award 2023**  
**Kaplan International Pathways (Australia/NZ)**  
(Foundation leading to Adelaide, Murdoch, Newcastle, Massey etc)



**Agent Premier Club 2020/2021**  
**StudyGroup**  
(Pathway leading to Durham, Sussex, Surrey, Cardiff, Sheffield, Leeds etc)



**Top Partner UK 2016 Singapore**  
**INTO University Partnership**  
(Pathway leading to Exeter, Manchester, Newcastle, City, Queen Uni Belfast, UEA etc)

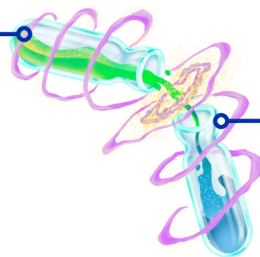


**We believe we are one of the Top 3 agency (if not the Top) for placement to UK & Australia Pathways in 2023**

## Student Recruitment A Blend of Art and Science

### Science

We leverage cutting-edge digital marketing, organizing events, deploying strategies and utilizing data analytics to ensure precise targeting and scalable outreach while keeping a low acquisition cost on a per student recruited basis.



### Art

Our experienced counselling team specializes in personalized interactions, building trust with students and parents effectively guiding them toward a successful enrollment.

**Our counselors are equipped with the expertise and experience to deal with students and parents through every step of the journey.**

**With our in-depth knowledge of social media marketing and data analytics, we employed a host of strategies to reach a much wider target audience for a steady pipeline of quality students.**



# Why work with us?

## Credibility

We are the trusted partner of many Top Universities worldwide

**14**

World Top 100 Universities

**22**

Australia Universities

**4**

Australia Group of 8

**12**

UK Russell Universities

**60+**

UK Universities

### Australia & New Zealand Institutions



### United Kingdom & Ireland Institutions



### Hospitality & Culinary Institutions

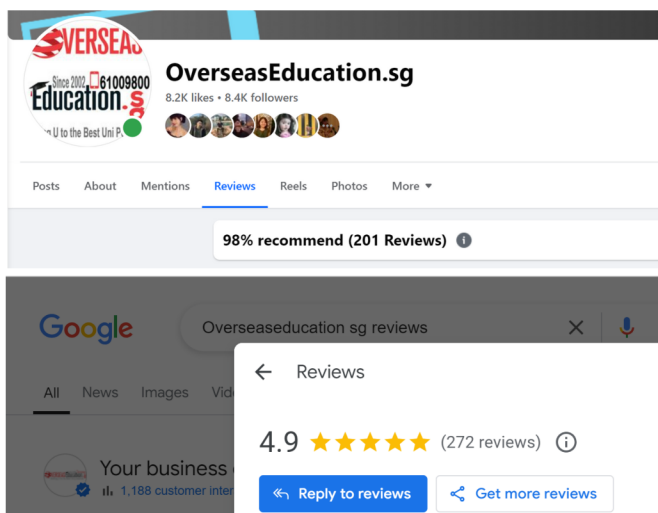


### Australia | UK | Canada | US | NZ Pathway Providers



## Our Excellent Services

Top-Notch Services Provided by Our Senior Counsellors



**Our Facebook Statistics**

➤ **8,400+** Followers  
➤ **200+** Reviews  
➤ **98%** Recommend

Read The Reviews:



**Our Google Statistics**

➤ **270+** Reviews  
➤ **4.9/5** ★★★★★

Read The Reviews:





# Why work with us?



## Prime Location in the Heart of Downtown Orchard

Benefit from a highly visible presence at one of Singapore's busiest and most iconic shopping districts. Our central location at Orchard Road ensures maximum exposure and convenience for both prospective students and partners.



Scan QR code for  
360° View of Our  
Office



## Exclusive Branding Opportunities

We offer premium branding opportunities, including Pillar Wrap allocations for our partners at one of the busiest junction in Singapore. This prime spot guarantees unmatched visibility for our partner institutions, right in the heart of possibly Singapore's busiest shopping district.



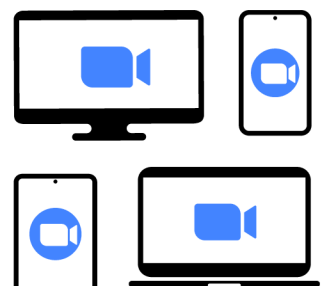
## Many more recruitment opportunities for Our Partners



Open House



Pre-Departure Events



Zoom Counselling &  
Virtual Fair



# Why work with us?

## Free Participation in our Well-Attended Fairs

**6**

Fairs Annually

**1,000+**

Visitors

**50+**

Booths

**FREE**

Participation for Institutions



## Extensive Social Media Marketing Outreach

We devote significant resources in paid digital marketing campaign in many platforms. Coupled with our hive of activities, we can generate significantly more quality leads for nurturing into conversions.

### Monthly

**>10,000**

Website Visitors & Social Media Clicks

**>200**

Leads & Walk-ins

### Annually

**6 Digits**

Marketing Budget for Social Media

## Huge Database & Referrals

We devote significant resources in paid digital marketing campaign in many platforms. Coupled with our hive of activities, we can generate significantly more quality leads for nurturing into conversions.

- ▶ We have worked on many students & parents who gladly recommend their friends & siblings

**5,000+**

Success Cases

- ▶ We get many referrals due to our exceptional service! Sometimes, they will ask for "**2nd Opinion**" after they applied

**10,000+**

Database Leads



Get Together Dinner hosted by our Staff during fam trips



# Why work with us?

## Active Promotion for Our Partners

**ANU OPEN DAY** in Singapore Jointly Organised by OverseasEducation.sg



**Check out Our Radio Adverts for Singapore ANU Open Day**

**SCAN ME**

✱ We can also organise Open Day for our University Partners

## Win-Win for All : Your Trusted Partner-in-Excellence

Student Aggregators are now prevalent & we have demonstrated that we can deliver without much support.

If we have direct agreement, we can do much more for the University :- increasing the student numbers as well as raising the profile of the University in Singapore at no extra cost!

**We are one of the TOP Overseas Student Placement Agencies in Singapore (Possibly in the TOP 3)**

### Enrolments we have facilitated to Monash University

Initial Contract

2019-2023

2024

**28**

Enrolments

**30**

Enrolments

**11**

Enrolments





Level 7 Orchard Shopping Centre  
321 Orchard Road S(238866)  
Next to 313 Somerset MRT Exit B



**6100 9800**

**6817 9800**

(10 Lines)



**info@OverseasEducation.sg**



**www.OverseasEducation.sg**

#### TERMS OF USE

Whilst every effort has been made to ensure that the information published in this publication is correct, OverseasEducation.sg Pte Ltd assumes no responsibility or liability for any errors or omissions in the content of this publication.

This publication is intended to be used on a "Commercial in Confidence" basis.